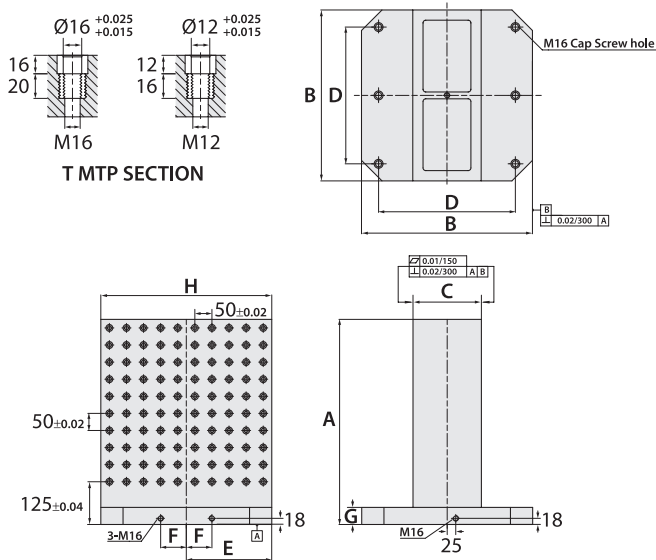


M/C DOUBLE SIDED TOOLING COLUMN

- Heat treated (Normalized)
- Application: Good for horizontal M/C

FEATURES:

Locked by MTP locating holes.
Using the assorted, rationalized jig component, you can quickly build up to meet requirement jig.



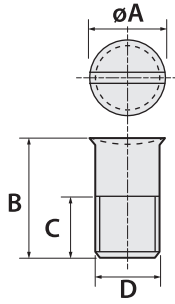
SPECIFICATIONS (Material: FCD 50 Ductile Iron / Aluminum A356)

Unit: mm

Model	A	B	C	D	E	F	G	H	T	No. of MTP Holes	Mounting Holes	Weight (kg)		
												FCD50	A356	
HDH-300300-0500-12	500	300	80	250	150	40	50	300	Ø12	M12	96	4	110	—
HDH-400400-0500-12	500	400	150	320	200	55	50	400	Ø12	M12	128	4	165	56
HDH-400400-0650-12	650	400	150	320	200	55	50	400	Ø12	M12	176	4	210	86
HDH-500500-0600-12	600	500	200	400	250	75	50	500	Ø12	M12	200	6	265	91
HDH-500500-0750-12	750	500	200	400	250	75	50	500	Ø12	M12	260	6	335	135
HDH-630630-0700-12	700	630	250	500	315	100	50	630	Ø12	M12	288	6	435	154
HDH-630630-0850-12	850	630	250	500	315	100	50	630	Ø12	M12	360	6	516	202
HDH-800800-0800-12	800	800	300	640	400	135	50	800	Ø12	M12	420	6	660	214
HDH-800800-1000-12	1000	800	300	640	400	135	50	800	Ø12	M12	540	6	800	318
HDH-10001000-1000-12	1000	1000	350	800	500	165	55	1000	Ø12	M12	684	6	1158	—
HDH-10001000-1250-12	1250	1000	350	800	500	165	55	1000	Ø12	M12	874	6	1375	—
HDH-300300-0500-16	500	300	80	250	150	40	50	300	Ø16	M16	96	4	105	—
HDH-400400-0500-16	500	400	150	320	200	55	50	400	Ø16	M16	128	4	160	60
HDH-400400-0650-16	650	400	150	320	200	55	50	400	Ø16	M16	176	4	205	86
HDH-500500-0600-16	600	500	200	400	250	75	50	500	Ø16	M16	200	6	260	103
HDH-500500-0750-16	750	500	200	400	250	75	50	500	Ø16	M16	260	6	330	135
HDH-630630-0700-16	700	630	250	500	315	100	50	630	Ø16	M16	288	6	430	170
HDH-630630-0850-16	850	630	250	500	315	100	50	630	Ø16	M16	360	6	505	202
HDH-800800-0800-16	800	800	300	640	400	135	50	800	Ø16	M16	420	6	650	210
HDH-800800-1000-16	1000	800	300	640	400	135	50	800	Ø16	M16	540	6	790	318
HDH-10001000-1000-16	1000	1000	350	800	500	165	55	1000	Ø16	M16	684	6	1158	—
HDH-10001000-1250-16	1250	1000	350	800	500	165	55	1000	Ø16	M16	874	6	1375	—

OPTIONAL ACCESSORIES:

PROTECTION PLUG

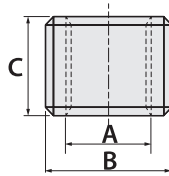


SPECIFICATIONS (Material: S45C)

Unit: mm

Model	A	B	C	D (Thread)	Weight (kg)
HPP-12-JIS	14	22	11	M12	0.02
HPP-16-JIS	18	25	13	M16	0.05

THREADED INSERT

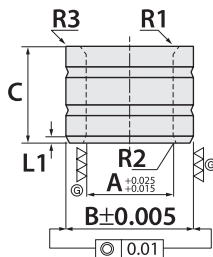


SPECIFICATIONS (Material: S45C, Hardness: HRC 32°~35°)

Unit: mm

Model	A	B	C	Weight (kg)
HTI-0612-10	M6x1.0	M12x1.5	10	0.005
HTI-0814-12	M8x1.25	M14x1.5	12	0.008
HTI-1016-15	M10x1.5	M16x1.5	15	0.010
HTI-1218-16	M12x1.75	M18x2.0	16	0.015
HTI-1420-18	M14x2.0	M20x2.0	18	0.030
HTI-1622-20	M16x2.0	M22x2.0	20	0.025
HTI-2028-25	M20x2.0	M28x2.0	25	0.050

POSITIONING BUSHING



SPECIFICATIONS (Material: SUJ2, Hardness: HRC 60°)

Unit: mm

Model	A	B	C	R1	R2	R3	L1	Weight (kg)
HPB-0613-10	ø6	ø13	10	1	0.5	0.5	1.25	0.007
HPB-0815-10	ø8	ø15	10	1	0.5	0.5	1.25	0.009
HPB-1018-12	ø10	ø18	12	1.5	1	0.5	1.5	0.015
HPB-1220-12	ø12	ø20	12	1.5	1	0.5	1.5	0.017
HPB-1423-16	ø14	ø23	16	1.5	1	0.5	1.5	0.030
HPB-1523-16	ø15	ø23	16	1.5	1	0.5	1.5	0.028
HPB-1622-16	ø16	ø22	16	1.5	1	0.5	1.5	0.025
HPB-1826-20	ø18	ø26	20	2	1.5	0.5	2.5	0.040
HPB-2030-20	ø20	ø30	20	2	1.5	0.5	2.5	0.060
HPB-2230-20	ø22	ø30	20	2	1.5	0.5	2.5	0.050
HPB-2535-20	ø25	ø35	20	2	1.5	0.5	2.5	0.070
HPB-3042-25	ø30	ø42	25	2	1.5	0.5	2.5	0.130
HPB-4055-30	ø40	ø55	30	3	2	1	3	0.255
HPB-5070-30	ø50	ø70	30	3	2	1	3	0.430