

ELECTRO-PERMANENT MAGNETIC INDEX TABLE



Features:

- Special pneumatic cylinder design, as massive load is on disk, it reduces friction and assures high accuracy and repeatability.
- Coupling gear is made of high quality bearing steel, high rigidity, high precision, accuracy does not change with the hours of use.
- Magnetic force as high as $1250 \pm 5\% / 100\text{cm}^2$ (4 magnetic poles).
- No need to continuously supply power when in use, no wire interference, no temperature rise, good for continued use in a long time.
- Magnetic force is adjustable.
- Strong tightening device, heavy load cutting.



Applicable Range:

- Most suitable for boring bed, milling machine, surface grinder, precision division.
- Workpiece thickness requirement above 10mm.
- Holding workpiece requires contact from at least 4 magnetic poles.
- Provide five-sided processing, one time processing step.

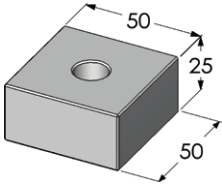
SPECIFICATIONS

Model		ECMC-PI300	ECMC-PI470	ECMC-PI600	ECMC-PI800
1	Length x Width	300X300mm	470X470mm	600X600mm	800X800mm
2	Height	188	185	229	304
3	Drive mode	Vertical	Pressure 5 ~ 8kgs/cm ²		
		Turning	Manual		
4	Theoretical maximum vertical load value	1200	2400	3400	4500
5	Allowable load weight (kg)	500	1000	2000	3000
6	Equal division	2,3,4,6,8,12,24	2,3,4,6,8,9,12,18,24,36,72		
7	Disk turning direction	Clockwise and counterclockwise			
8	Division degree	15°/mark	5°/mark		
9	Weight (kg)	110	235	462	993
10	Magnetic pole dimensions	50X50 mm			
11	Number of magnetic pole	16	48	72	144
12	Total magnetic force kgf $\pm 5\%$	5000	15000	22500	45000
13	Voltage (single phase)	AC 220V			
14	Controller	1N1C	1N2C	1N2C	1N4C
15	Voltage (single phase)	AC 380V ~ 440V			
16	Controller	1N1C	1N2C	1N2C	1N4C

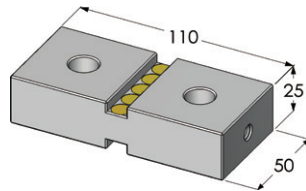
OPTIONAL ACCESSORIES

(For Pole Size: 50x50mm)

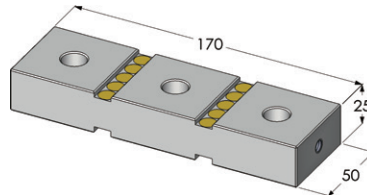
Magnetic Soft Jaws
ECMC-MSJ125B



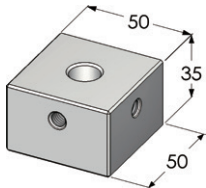
ECMC-MSJ225B



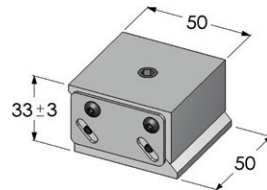
ECMC-MSJ325B



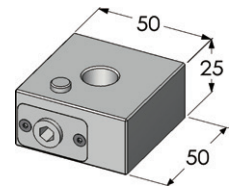
Fixed Soft Jaws
ECMC-FSJ50B



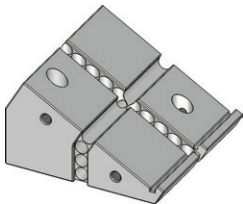
Moveable Spring Pads
ECMC-MSP50B



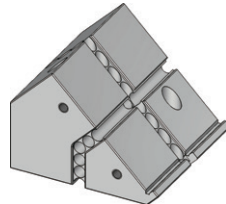
Top Pin Soft Jaws
ECMC-TP50B



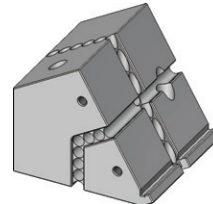
Magnetic Angle Soft Jaws
30°
ECMC-ANG30B



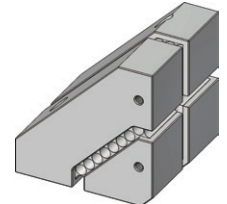
45°
ECMC-ANG45B



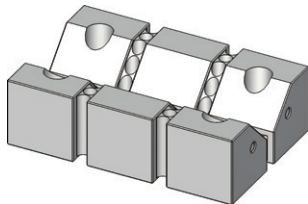
60°
ECMC-ANG60B



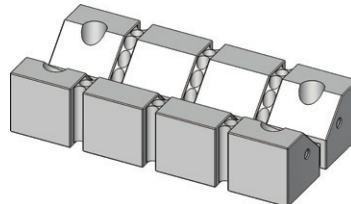
90°
ECMC-ANG90B



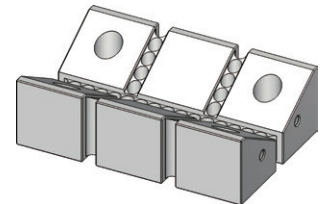
Magnetic Angle Soft V Jaws
90° (3)
ECMC-ANG90V3B



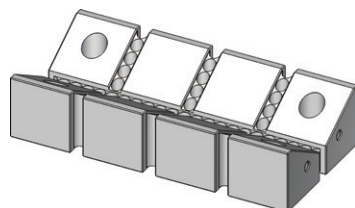
90° (4)
ECMC-ANG90V4B



120° (3)
ECMC-ANG120V3B



120° (4)
ECMC-ANG120V4B



Magnetic Angle Soft V Jaws
ECMC-MSP

